

# Framing the view

Complementing the view is as important as the location when it comes to deciding the interiors of a coastal home – and the owner of this sail loft chose an expert eye

WORDS: Carol Burns

**W**ho doesn't love a room with a view? There is something quite spoiling and extremely relaxing about sitting in a super comfortable chair overlooking a coastal scene.

On the wide Helford estuary sits a contemporary converted sail loft, which has a run of overhead skylights and large bi-folding doors which open directly onto a small balcony overlooking the river, allowing you to enjoy the sound of the water lapping against the wall on a still summer night. Yet you feel safe and cosseted inside when the winter gales are blowing and

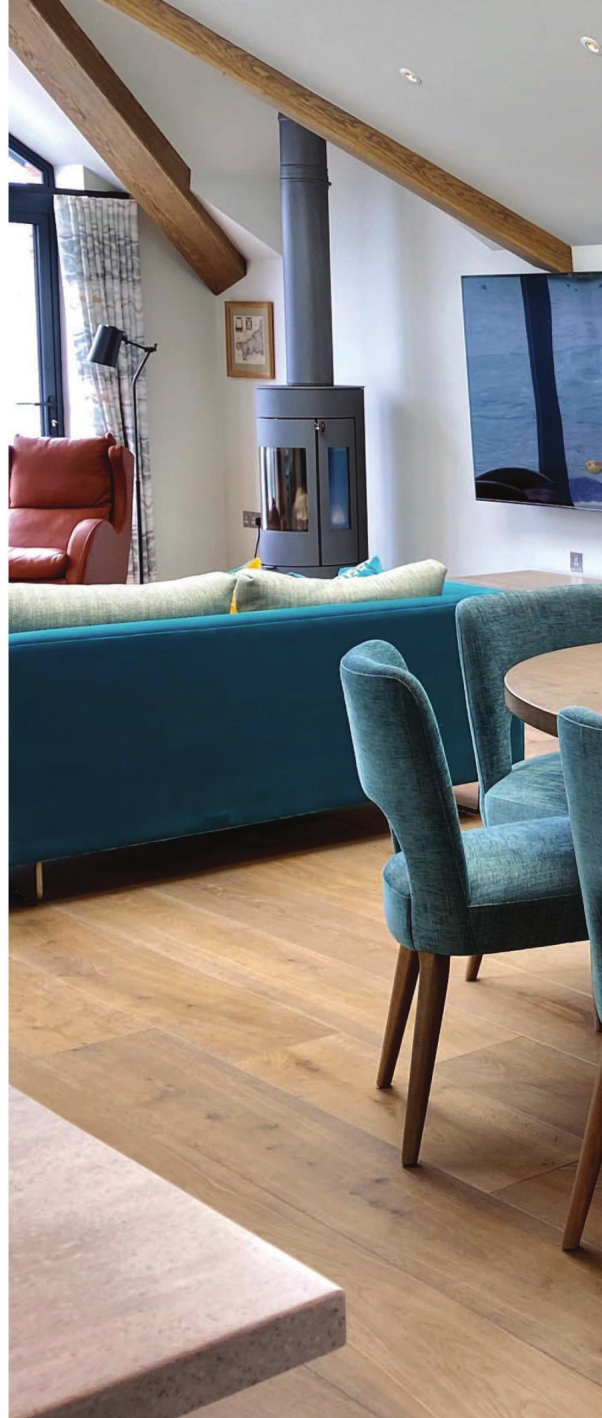
you can be tucked up with the wood burner alight.

The soft leather chairs swivel to enjoy the comings and goings on the river, but turn easily to face the sofa and enjoy conversations with family and friends.

Although the room is long, the large window allows a clear view even from the far end where the dining table is situated, so dinner can be enjoyed watching the twinkling lights of the boats and the houses on the opposite side of the estuary.

'A perfect room to kick back, relax and enjoy the view,' says Frances Healy who created the look. ♦

[franceshealyinteriors.co.uk](http://franceshealyinteriors.co.uk)



**TOP:**  
A funny quirky corner and low ceiling, are disguised by this bespoke set of locally made wall-hung oak cabinets.

**LEFT:**  
'The swivel chairs are instantly comfortable in this superb quality soft leather and just pick up with the hint of the same colour in the rug and the voile curtains,' says Frances.

**RIGHT:**  
'I was inspired by this wool rug as it reminded me of wet pebbles on a beach and I love the contrast of the soft wool texture against the metal and timber of the coffee table.'

**FAR RIGHT:**  
'Adding a splash of yellow velvet to the scatter cushions on the corner unit, added warmth to this otherwise cool scheme.'

